

Valley Line LRT – Temporary Full Closure of 100 Street at 102 Avenue

EDMONTON, AB – May 21, 2019 – Starting on or around June 10, 2019, the intersection at 100 Street and 102 Avenue will be fully closed.

This closure is to accommodate work required to complete the intersection. It involves laying rail bed, track, and finally paving the lanes. This will be 24-hour work. The first week will be the loudest as crews break through the concrete.

The closure will last for approximately six weeks.

This closure will commence once 101 Street has re-opened. These roads will not be closed at the same time.

To accommodate this work, the public will be impacted in the following areas:

- The intersection at 100 Street and 102 Avenue will be fully closed.
- Please visit <https://www.edmonton.ca/ets/general-service-alerts.aspx> for all ETS changes and updates.
- Pedestrian access will be maintained. Access will vary so please watch for and obey all construction signage.

This will require overnight work. Crews will have to perform all or some of this work during night hours. TransEd is aware that overnight noise is disruptive and has taken several noise mitigation actions in advance of this work.

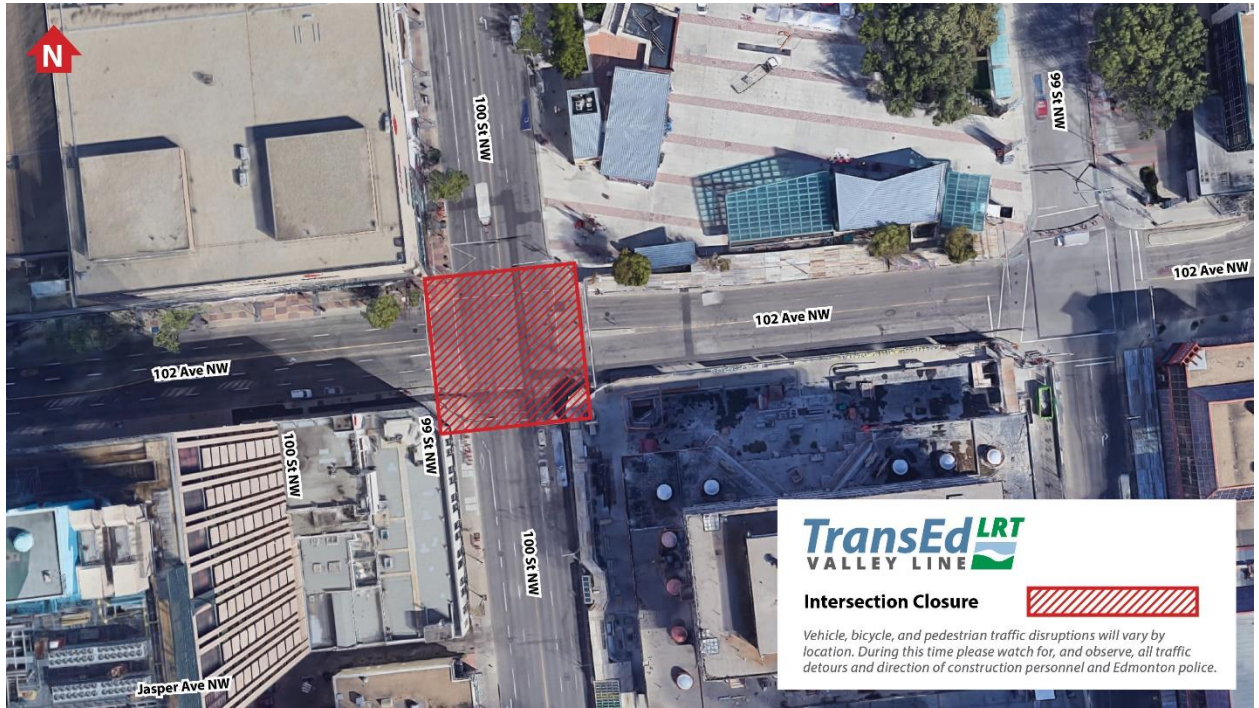
TransEd is committed to following all City of Edmonton bylaws and regulations and has obtained an overnight roadwork permit. *City of Edmonton Bylaw C14600.

We ask for your understanding and patience as construction progresses. For the most current, up-to-date information in your area, please visit <http://transedlrt.ca/advisories/>.

We encourage you to sign up for our e-newsletter on our website www.transedlrt.ca

For more information, visit our website <http://transedlrt.ca> or contact us via email at info@transedlrt.ca or by phone 780-224-0964.





TransEd LRT
VALLEY LINE

Intersection Closure



Vehicle, bicycle, and pedestrian traffic disruptions will vary by location. During this time please watch for, and observe, all traffic detours and direction of construction personnel and Edmonton police.